

# ELEVAH E6 MOVE

Max. working height	6 m	
Max capacity	200 kg	
Number of people	1	
Use	Internal	
<b>A</b>	Closed machine height	1960 mm
<b>B</b>	Min. height from the ground*	289 mm
<b>C</b>	Maximum platform height	3980 mm
<b>D</b>	Base overall dimensions	1105 mm
<b>E</b>		780 mm
<b>F</b>	Cage dimensions	685 mm
<b>G</b>		600 mm
Machine weight	660 kg	
Drive wheels dimension	Ø 186 x 60 mm	
Swivel wheels dimensions	Ø 150 x 40 mm	



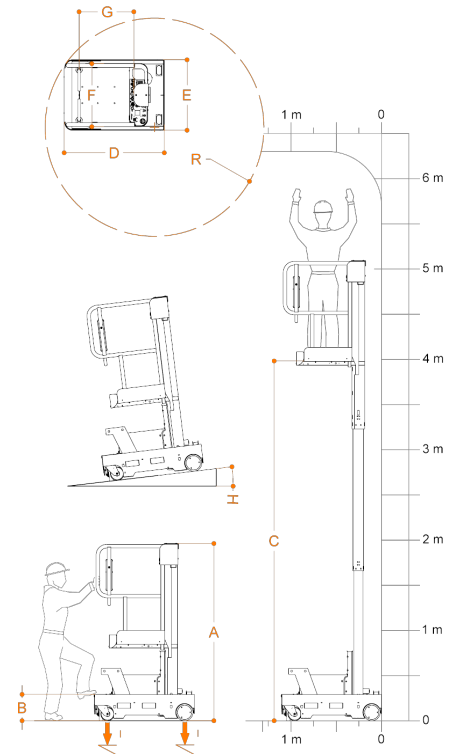
## PERFORMANCE

Power supply	Electrical 24 V	
Batteries	2 Trojan Lead-Acid 12V 105 Ah	
Battery charger	115V – 230V 50/60HZ	
<b>H</b>	Maximum climbing ability	15%
	Climbing ability at height	2,5%
	Internal turning radius	0
	External turning radius	1250 mm
	Max. speed (rising – descending)	0,2 m/s
	Maximum shifting speed	5,5 km/h
	Maximum shifting speed at height	1 km/h
<b>I</b>	Maximum pressure for wheel at full load**	2,95 kN
	Work cycles (with fresh batteries) ***	100

\* There is an intermediate step.

\*\* Maximum pressure whereas the weight of the platform plus the maximum load on the basket are completely distributed on one side of the platform (totally asymmetric load).

\*\*\* By work cycle we mean a self-propelled movement of 20 m with a full ascent to and descent from the maximum height and with adjustment of the loading platform.



Compliant with **EN280** rule.  
Approved for indoor use or outdoor use in the absence of wind.